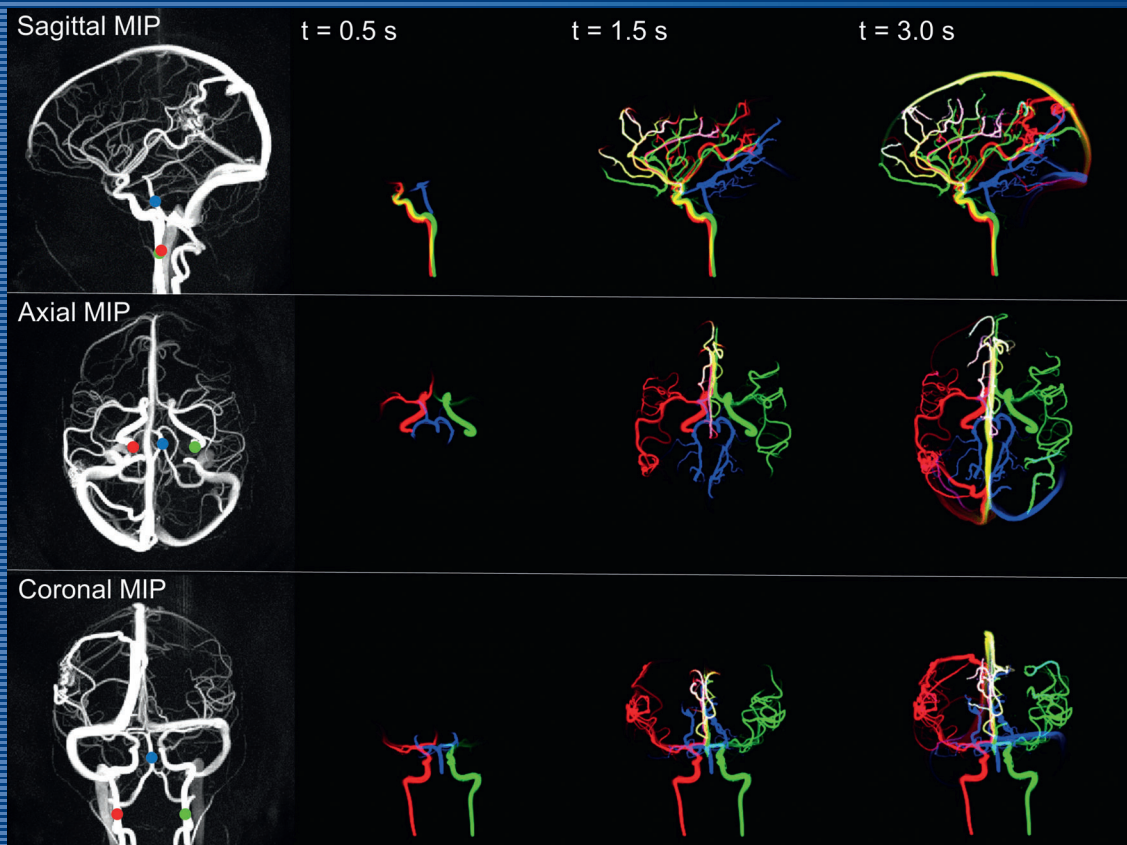


MAGNETIC RESONANCE IN MEDICINE



Computed flow trajectories from in-vivo 4D Flow data acquired from a subject with a temporoparietal arteriovenous malformation. Seed points "virtual injections" were placed in silico in the left internal carotid artery (green), right internal carotid artery (red) and basilar artery (blue), shown overlaid on MIP angiograms, with blood flow streamlines calculated at various subsequent time points using an algorithm that accounts for displacement and fluid constraints, from the article by Roberts et al. (pp. 2495–2511).